



*A RandomizEd Trial of ENtERal Glutamine to
minimIZE Thermal Injury*

Pharmacy Manual

Intended Audience: Pharmacists, Pharmacy Technicians

This study is registered at [Clinicaltrials.gov](https://clinicaltrials.gov).
Identification number NCT00985205





**Critical Care
Nutrition**



**Clinical Evaluation
Research Unit**

Document History

Version: Date	Superseded Version (Date)
Version 1: 15-Jan-2016	Original version
Version 1.1: 09-Feb-2016	15-Jan-2016
Version 2: 02-Sep-2016	09-Feb-2016
Version 3: 23-Apr-2019	02-Sep-2016



Table of Contents

Document History	2
Study Contacts.....	5
Study Synopsis	7
Overview	7
Study Design	7
Setting	7
Study Population	7
Study Intervention	7
Outcomes	7
Trial Duration.....	7
Diagram of Study Overview	8
Roles & Responsibilities	8
CERU is responsible for the following:	8
The local site Research Pharmacy is responsible for the following:	8
Study Preparation	9
Delegation of Authority Log	9
Training	9
Central Randomization System (CRS) Access	9
Patient Population.....	10
Inclusion Criteria.....	10
Exclusion Criteria	10
Investigational Product.....	12
Duration of Study Intervention.....	12
Changes in IP Dosing.....	12
Clinical Supplies.....	13
Glutamine	13
Nutrestore™ (L Glutamine)	13
Nutrestore™ (L Glutamine)	13
Maltodextrin (placebo).....	14
Maltrin® M100 Maltodextrin (control)	14
Maltrin® M100 maltodextrin.....	14



IP Dispensing	15
Central Randomization System (CRS) Procedures	17
Administration of IP	20
Ordering of Investigational Product.....	21
APPENDICES.....	22
Appendix A: Pharmacy Delegation and Training Log	
Appendix B: NutreStore™ (L-glutamine) monograph	
Appendix C: Maltrin M-100® maltodextrin monograph	
Appendix D: Temperature Log	
Appendix E: IP Dispensing Log	
Appendix F: IP Accountability Log - Glutamine	
Appendix G: IP Accountability Log - Maltodextrin	



Study Contacts

Name	Role	Contact Details
Dr. Daren Heyland	Principal Investigator, Coordinating Investigator	dkh2@queensu.ca Cell: +1403-915-5573 Fax: +1613-548-2428
Chris Gray, CCRP	Central Pharmacy Manager, Research Pharmacy Consultant	chris.gray@epipharm.com office: 613-549-6666 ext. 3339
Maureen Dansereau	Project Lead	danserem@kgh.kari.net office: +1613-549-6666 ext. 6686 cell: +1613-888-4320
Alfonso Ortiz	Project Assistant	ortizrla@kgh.kari.net office: +1613 549 6666 ext. 4146
IT Help Desk	http://www.ceru.ca/helpdesk/open.php	

All questions related to the investigational product, storage, shipping, or resupply should be directed to the Central Pharmacy Depot Manager.

All questions related to study procedures should be directed to the Project Lead (PL) or Project Assistant (PA).

PLEASE NOTE: the Project Lead and Project Assistant are blinded to treatment allocations. Please take care not to unblind the PL or PA in your communications, written or verbal.

In the event you are unable to reach the PL or PA, please contact the Principal Investigator (PI).



Glossary

ACU	Acute Care Unit (ICU or Burn Unit)
BMI	Body Mass Index
CERU	Clinical Evaluation Research Unit at Kingston General Hospital (Methods Centre)
CRS	Central Randomization System
DAL	Delegation of Authority Log
DNR	Do not resuscitate order
EN	Enteral Nutrition
FDA	Food and Drug Administration (USA)
GCP	Good Clinical Practice
HC	Health Canada
IP	Investigational Product
NPO	Nothing by mouth
PA	Project Assistant
PL	Project Lead or delegate
RC	Research Coordinator
SI	Site Investigator
TBSA	Total Body Surface Area
PO	Orally, by mouth



Study Synopsis

Overview

The primary purpose of this study is to determine the overall treatment effect and safety of enteral glutamine administration to severely burn injured patients in acute care units (ACUs). We assert that glutamine administration will reduce acute care unit and hospital length of stay, decrease 6 month mortality, decrease hospital-acquired blood stream infections from Gram negative organisms, and improve the physical function of surviving burn injured patients.

Study Design

A large, multicenter, double-blind, pragmatic, randomized controlled trial of 1200 patients with severe burns randomly allocated to receive enteral glutamine or placebo (maltodextrin).

Setting

Approximately 60 tertiary acute care burn centres in Canada, the United States, Europe, Latin America, and Asia.

Study Population

1200 adult patients with deep 2nd and/or 3rd degree burns requiring skin grafting. For patients aged 18 – 39 years we require a TBSA (Total Burn Surface Area) burn $\geq 20\%$, or in the presence of an inhalation injury, a minimum of $\geq 15\%$ TBSA burn is acceptable. For patients aged 40 – 59 years we require a TBSA burn $\geq 15\%$. For patients aged 60 years or older we require a TBSA burn $\geq 10\%$.

Study Intervention

Patients will receive glutamine or placebo (maltodextrin) through their feeding tube every 4 hours, or orally 3 – 4 times a day, for a total of 0.5 g/kg/day until ≥ 7 days after their last grafting operation, or discharge from the acute care unit, or 3 months after admission to the acute care unit, whichever comes first.

Outcomes

Primary outcome: Time to discharge alive

Secondary outcome: 6-month mortality

Tertiary outcomes: Health-related quality of life with particular focus on physical function
Incidence of acquired bacteremia due to Gram negative organisms
Hospital mortality
Duration of mechanical ventilation
Acute care unit length of stay
Hospital length of stay

Trial Duration

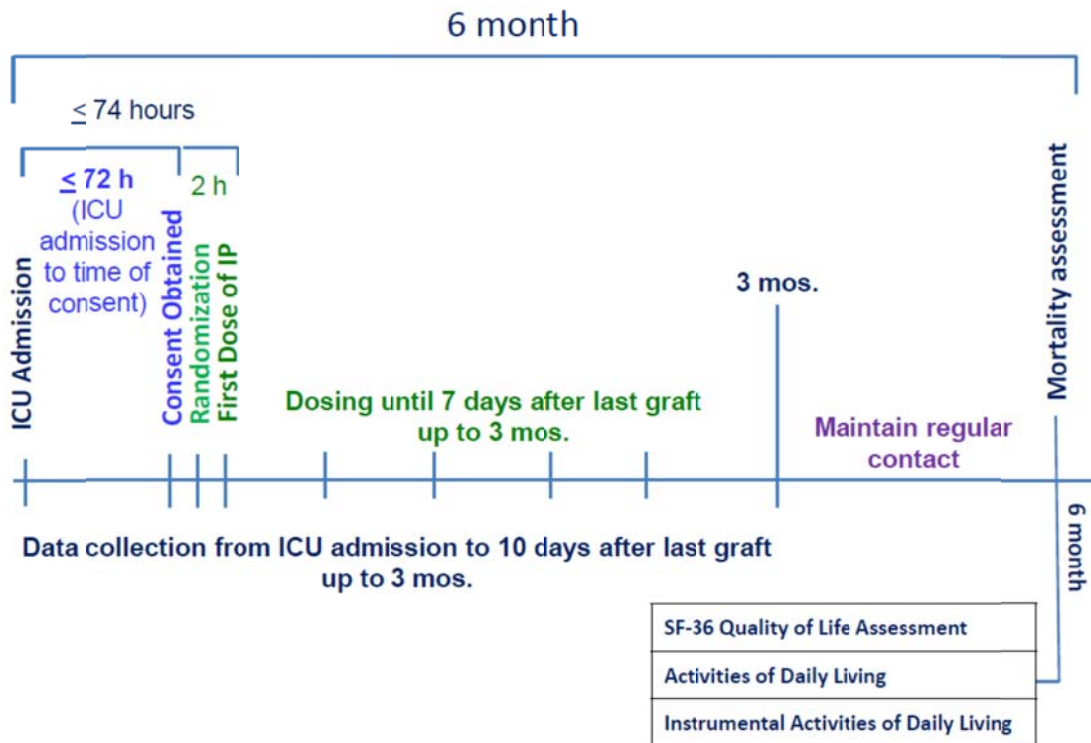
Study Recruitment Period

4 years - based on approximately 1 patient per site per month, as demonstrated in the pilot study.



Diagram of Study Overview

Below is a diagrammatic representation of the RE-ENERGIZE Study. Refer to appropriate sections of the Study Procedures Manual for comprehensive instructions for study activities.



Roles & Responsibilities

CERU is responsible for the following:

- Providing procedures and tools for implementation of Pharmacy procedures
- Providing training on procedures and tools
- Supplying a username and password for access to the Central Randomization System (CRS)
- Ensuring that study procedures are followed and the trial is conducted according to Good Clinical Practices.

The local site Research Pharmacy is responsible for the following:

- Providing a computer with internet access for the CRS
- Notifying CERU of any technical difficulties or malfunctions related to the CRS
- Allowing only authorized study personnel access to the CRS.
- Preparation of Investigational Product in accordance with the randomized treatment and study procedures
- Maintenance of Dispensing, Accountability and Destruction records.
- Oversight of local investigational product inventory, including the initiation of resupply orders before inventory falls to critical levels.
- Reporting protocol deviations and violations related to pharmacy procedures in a timely manner.



Study Preparation

Delegation of Authority Log

Each site should have a senior pharmacy team member who will ensure that all pharmacy staff (i.e Pharmacists and/or pharmacy technicians) who will have a material effect on The RE-ENERGIZE Study have documentation of both duties and tasks delegated to them and completion of associated training.

A Pharmacy Delegation & Training Log (**See Appendix A**), or similar log, is to be kept by the Pharmacy team and sent to CERU upon request.

Training

Each member of the site research team should be qualified by education, training and experience to assume responsibility for the proper conduct of the trial. The Site Investigator is responsible for ensuring that s/he and the local staff are adequately trained in GCP (GCP 4.1.1). Each pharmacy team member (i.e. Pharmacist or pharmacy technician) must have documented training on the RE-ENERGIZE study prior to site activation, or in the case of new staff joining the study mid-stream, before they initiate any study related duties and/or tasks.

Study specific training will be provided by CERU Staff and conducted either in person or via webinar, a corresponding training record will be provided. In instances where members of the local pharmacy team conducts internal team training related to the study, they should document the training in accordance with their local SOPs (e.g. training record, attendance sheet, etc).

Central Randomization System (CRS) Access

The Central Randomization System (CRS) is a web-based system that will be used to both screen and randomize eligible patients into the RE-ENERGIZE Study. After each patient is randomized, the site pharmacy team member will access the patient treatment allocations through the Central Randomization System.

- Pharmacy team member(s) must complete the Pharmacy tab of the CRS Access Excel workbook, sent to the site electronically, and return it to the CERU Project Lead before CRS access will be granted.
- Once the completed Excel sheet is received, login information will be sent to the email address(es) provided.
- The Pharmacy is responsible for notifying the CERU Project Lead with any changes in personnel.

Access to the Central Randomization System (CRS) will be granted by CERU following the completion of required study training.

The Project Lead will notify the site Investigator, coordinators and pharmacists when their site is activated and they may begin patient recruitment.



Patient Population

Inclusion Criteria

- 1) **Deep 2nd and/or deep 3rd degree burns requiring grafting**
The presence of deep 2nd degree and/or deep 3rd degree burns requiring grafting is an assessment that must be made by the surgeon/physician.
- 2) **Patient meets one of the following 3 criteria:**
 - a. Patients 18 – 39 years of age with TBSA burn \geq 20%
 - b. Patients 18 – 39 years of age with TBSA burn \geq 15% WITH inhalation injury
 - c. Patients 40 - 59 years of age with TBSA burn \geq 15%
 - d. Patients \geq 60 years of age with TBSA burn \geq 10%

Exclusion Criteria

- 1) > 72 hours from admission to Acute Care Unit (ACU) to time of consent
This refers to admission to your ACU. If a patient is transferred from another facility, the clock starts from the time of admission to your unit. An exception would be a patient who has been at another facility an extended period of time post burn prior to admission to your unit.
- 2) Patients younger than 18 years of age
- 3) Patients with renal dysfunction, defined as:
In patients **without known renal disease**, renal dysfunction defined as a serum creatinine >171 μ mol/L or 1.93 mg/dL or a urine output of less than 500 mL/last 24 hours (or 80 mL/last 4 hours if a 24 hour period of observation is not available).

In patients **with acute on chronic renal failure** (pre-dialysis), an absolute increase of >80 μ mol/L or 0.9 mg/dL from baseline or pre-admission creatinine or a urine output of <500 mL/last 24 hours (or 80 mL/last 4 hours) will be required.

Patients with **chronic renal failure on dialysis** will be excluded.
- 4) Liver cirrhosis Child-Pugh class C liver disease
- 5) Pregnant or lactating females (urine/blood tests for pregnancy will be done on all women of childbearing age by each site as part of standard of ACU practice)
- 6) Contra-indication for EN: intestinal occlusion or perforation, intra-abdominal injury.
(Being NPO is not considered a contraindication for Enteral Nutrition).
- 7) Patients with injuries from high voltage electrical contact.
- 8) Patients who are moribund (not expected to survive the next 72 hours in the judgement of the Site Investigator or delegated doctor in charge).
Note that an isolated DNR does not fulfil this criteria.



- 9) Patients with extreme body sizes: BMI < 18 or > 50 kg/m²
Ideally BMI should be calculated using the patient's pre-burn dry weight. Given that there may be some subjectivity involved in the determination of BMI, err on the side of including the patient.

- 10) Enrollment in another industry sponsored ICU intervention study (*co-enrollment in all non-randomized academic studies will be approved. For academic RCTs, forward a synopsis or abstract of the study to the Project Lead to obtain pre-approval of the study to which you would like to co-enroll.*)

- 11) Received glutamine supplement for > 24 hours prior to randomization.
This refers to consistent administration of glutamine over the 24 hr period prior to randomization. If the patient received random or intermittent doses of open label glutamine, discontinue the glutamine prior to randomization.

- 12) Known allergy to maltodextrin, corn starch, corn, corn products or glutamine.



Investigational Product

Patients randomized to the RE-ENERGIZE Study will receive one of the following:

Name of Group	Intervention
Active	Glutamine
Control	Maltodextrin (placebo)

Patients will be randomized to receive investigational product (IP), either glutamine or placebo (maltodextrin), at the following dose:

- a. Patients with a BMI <35 will receive 0.5 g/kg/day of IP based on pre-burn dry weight* (actual or estimated).
- b. Patients with a BMI \geq 35 will receive 0.5 g/kg/day of IP based on the adjusted body weight, as per calculation below.

$$\text{Adjusted Body Weight (ABW)} = \text{Ideal Body Weight (IBW) based on a BMI of 25} + [(\text{pre-burn dry weight} - \text{IBW}) \times 0.25]$$

*By dry weight, we mean prior to resuscitation and it is likely consistent with the usual weight recorded on a prior chart or obtained from a family member.

The Central Randomization System is programmed to calculate the patient's BMI based on the height and weight entered on the pre-Randomization form, and then calculate the patient's dosing weight based on the BMI. IP dosing is then calculated and displayed in accordance with the patient's Dosing Weight.

Duration of Study Intervention

Patients will receive the IP from randomization through 7 days post last successful graft, or ACU discharge, or 3 months from ACU admission, whichever comes first.

Changes in IP Dosing

As detailed above, the IP dose calculation is based on the patient's pre-burn dry weight. All patients will remain on the initially calculated dosage of IP for the duration of their participation in the study with one noted exception.

EXCEPTION: If the patient has a change in body weight sufficient for the clinical team to alter dosage of clinical treatments, the study treatment should also be adjusted. Pharmacy will be notified by the site investigator/delegate if there is a change in dosing weight.



Clinical Supplies

The active and control products will both be supplied in pre-packaged 5g packets. The active and control have the same visual appearance and taste.

Glutamine

Glutamine is the 'active' arm of treatment for the study.

Nutrestore™ (L Glutamine)

Nutrestore is an amino acid (L Glutamine) powder that is approved for oral use in short bowel syndrome by the FDA. L Glutamine is produced normally by the body and has important functions in regulation of gastrointestinal cell growth, function, and regeneration. Under normal conditions, glutamine concentration is maintained in the body by dietary intake and synthesis from endogenous glutamate. Data from clinical studies indicate that the role of and nutritional requirements for glutamine during burns, catabolic illness, trauma, and infection may differ significantly from the role of and nutritional requirements for glutamine in healthy individuals. Glutamine concentrations decrease and tissue glutamine metabolism increases during many catabolic disease states, and thus glutamine is often considered a "conditionally essential" amino acid.

Glutamine will be supplied to all sites in pre-blinded packets. Labelling on the packets varies slightly by region. The lot # on the back of each packet will be exposed and must be covered prior to being dispensed for patient administration.

Nutrestore™ (L Glutamine)

Nutrestore™ is an amino acid (L Glutamine) powder that is approved for oral use in short bowel syndrome by the FDA. Refer to product Information sheet (monograph) for more details (**See Appendix B**).

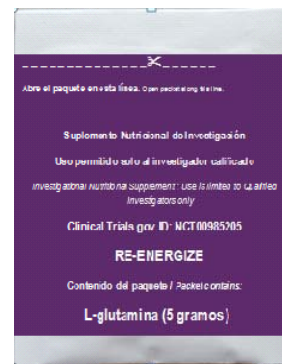
This product is pre-packaged in 5g individual packets.



North America



Europe



Latin America & Spain

STORAGE: NutreStore™ (L-glutamine powder for oral solution) should be stored at 25°C (77°F) with excursions allowed to 15° - 30°C (59° - 86°F). [See USP Controlled Room Temperature]

Each packet is 10.2 cm (4 inches) high X 7.6 cm (3 inches) wide X less than 0.3 cm (1/8 inch) thick.



Maltodextrin (placebo)

Maltodextrin is the ‘control’ arm of the treatment for the study.

Maltrin® M100 Maltodextrin (control)

The MALTRIN® M100 maltodextrin is produced by Grain Processing Corporation (GPC) and then packaged by Anderson Packaging for the trial. Maltodextrins are bland, low sweetness, pharmaceutical grade, white carbohydrate powders that are Generally Recognized As Safe (GRAS) as direct human food ingredients at levels consistent with current good manufacturing practices. They are prepared as a white powder by partial hydrolysis of corn starch with safe and suitable acids and/or enzymes. Patients will receive an iso-calorically delivered amount of maltodextrin (control) mixed with water or other liquids. Maltodextrin is a source of carbohydrate commonly found in standard enteral nutrition and has no metabolic effects other than serving as a source of additional energy. The maltodextrin used in this study contains approximately 19 calories per 5g packet.

Maltodextrin will be supplied to all sites in pre-blinded packets. Labelling on the packets varies slightly by region. The lot # on the back of each packet will be exposed and will need to be covered prior to being dispensed for patient administration.

Maltrin® M100 maltodextrin

The MALTRIN® M100 maltodextrin is produced by Grain Processing Corporation (GPC) and then packaged by Anderson Packaging for the trial. Refer to product Information sheet (monograph) for more details (**See Appendix C**).

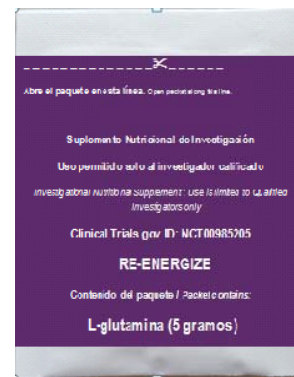
This product is pre-packaged in 5g individual packets.



North America



Europe



Latin America & Spain

STORAGE: Store under ambient conditions; protect from excessive heat and excessive humidity for extended periods of time.

Documentation of storage temperature must be provided upon request. If temperature is monitored and records are maintained and available for the storage area, a separate, study specific temperature log is not required. If the temperature of the storage area is not monitored, please maintain a study specific temperature log. Refer to **Appendix D** for a Temperature Log template.



IP Dispensing

The RE-ENERGIZE Study is being conducted globally. To maintain dosing consistency across all study patients, please dispense the IP in 5 gram increments.

1 dose = 5 grams

Daily study dose is calculated and displayed in the Central Randomization System (CRS) using the following formula:

Dosing Weight in kg X 0.5 = g/day (rounded to the nearest 5g)

Example:

Wt. 75 kg X 0.5 = 37.5g/day rounded to the nearest 5g = 40g/day

Wt. 74 kg X 0.5 = 37g per day rounded to the nearest 5g = 35g/day

The Dosing Weight Chart below displays g/day based on Dosing Weight and provides a dosing regimen based on q4h administration.

Dosing Weight Chart below:

Dose #	1	2	3	4	5	6	q4h	
							Total	
							doses	g/day
35-44	1	0	1	0	1	1	4	20
45-54	1	1	1	0	1	1	5	25
55-64	1	1	1	1	1	1	6	30
65-74	2	1	1	1	1	1	7	35
75-84	2	1	1	2	1	1	8	40
85-94	2	1	1	2	1	2	9	45
95-104	2	1	2	2	1	2	10	50
105-114	2	2	2	2	1	2	11	55
115-124	2	2	2	2	2	2	12	60
125-134	3	2	2	2	2	2	13	65
135-144	3	2	3	2	2	2	14	70

- 1) Determine the number of doses to be given per administration based on the number of administrations per day. If the patient's treatment dosage is 40g/day and the patient is receiving the IP q4 hours, the patient would receive 2 doses of 5g each at 2 administration intervals and 1 dose of 5g each at 4 administration intervals for a total of 8 doses/day (refer to chart above).
- 2) Obtain the appropriate product according to the treatment assignment, glutamine or maltodextrin.



- 3) Prepare and affix one label to each dose of the IP to be dispensed. Ensure each one dose packet is blinded by covering the Lot # on the back of the packet.

Sample Label template

Study: The RE-ENERGIZE Study
ID #: NCT00985205

**Enteral Supplement powder for
Investigational Use
(glutamine/maltodextrin)**
Sponsor: Dr. Daren Heyland

Patient Name: _____
Enrollment #: _____
Hospital Patient ID #: _____
Dosing Weight: _____ kg
Date: _____

Directions: Mix each 5 grams of IP with 50 mL of water (tap or sterile per standard procedure for enteral formulas), shake well and give as a bolus via feeding tube or with meals at the following times (or refer to Study Orders):

02:00 - _____ Grams
06:00 - _____ Grams
10:00 - _____ Grams
14:00 - _____ Grams
18:00 - _____ Grams
22:00 - _____ Grams

Store at room temperature

Recommended:

Prepare and dispense enough IP doses to last one week for each patient that is randomized.

- 4) Send blinded IP to the ACU. IP dispensed to the ACU is to be stored at room temperature in a secure location.
- 5) Complete the patient specific Investigational Product Dispensing Log (patient's name, date, which product was dispensed, expiry date, lot #, etc) and the Investigational Product Accountability Logs (amount received, destroyed, batch #, etc) (**see Appendices E, F & G**) and keep these with the Pharmacy study files.
- 6) Repeat steps 2 - 5 weekly for the duration of study intervention which is ≥ 7 days after the last successful grafting procedure (anticipated to be an average of 28 days), or discharge from the ACU, or death, whichever occurs first.
- 7) Destroy all expired products as per local procedures and record the destruction of product on the corresponding Investigational Product Accountability Log (**Appendices F & G**).
- 8) Pharmacy team member will be asked to provide the following, upon request:
 - Documentation that product is maintained at the required temperature.



Minor changes to these procedures to meet local pharmacy practices may be permissible upon approval by the Project Lead

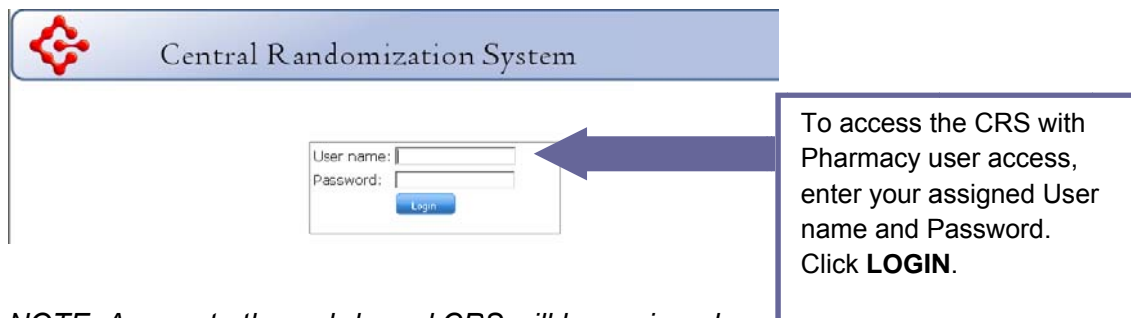
Central Randomization System (CRS) Procedures



Only the Pharmacy team is unblinded!

Dispensing is to be done within 2 hrs of randomization

- 1) After the Research Coordinator has confirmed eligibility and randomized the patient using the Central Randomization System (CRS), the research coordinator will immediately notify the pharmacy and provide:
 - a. the 8 digit randomization number (automatically generated online)
 - b. the patient's pre-burn dry weight
 - c. any other details required by the pharmacist to correctly confirm the subject (e.g. medical record number, name, age)
- 2) The pharmacy team member will access the RE-ENERGIZE CRS Login Page at: <https://ceru.hpcvl.queensu.ca/CRS/>



Central Randomization System

User name:

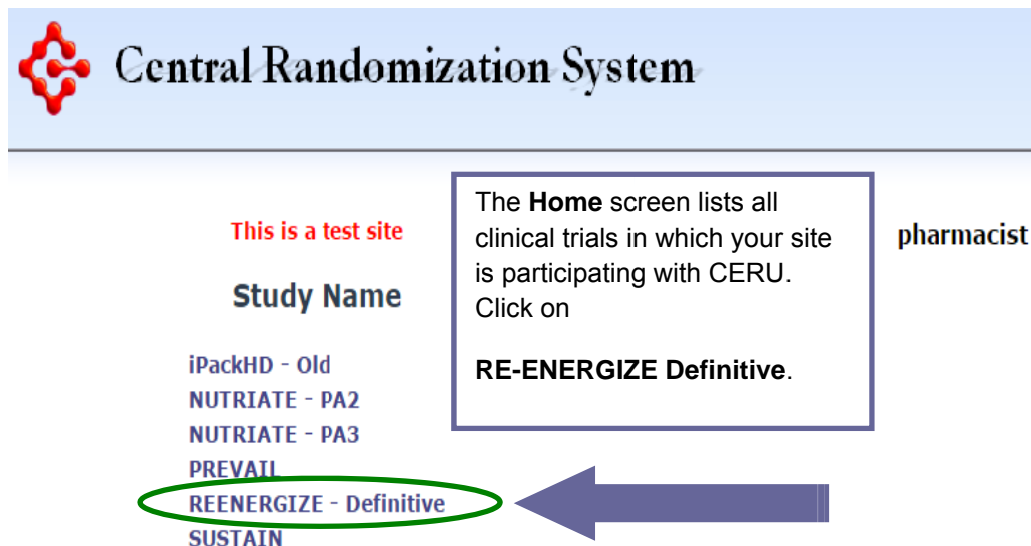
Password:

Login

To access the CRS with Pharmacy user access, enter your assigned User name and Password. Click **LOGIN**.

NOTE: Access to the web-based CRS will be assigned by The Clinical Evaluation Research Unit (CERU) upon receipt of the CRS Access Log completed by the site pharmacy team.

- 3) After you Login, you will be taken to the Home Screen, see below:



Central Randomization System

This is a test site

Study Name

iPackHD - Old
NUTRIATE - PA2
NUTRIATE - PA3
PREVATI
REENERGIZE - Definitive
SUSTAIN

The **Home** screen lists all clinical trials in which your site is participating with CERU. Click on **REENERGIZE Definitive**.

pharmacist



- 4) If you provide pharmacy services to more than one site participating in The RE-ENERGIZE Study, you will be taken to a screen that lists those sites, see example below:



This is a test site

RE-ENERGIZE

Sites

- # Site Name
- 1001 [Kingston General Hospital](#)
- 1005 St Michael's Hospital
- 1056 Royal Adelaide Hospital



Select the site at which the patient was randomized.

- 5) If you provide pharmacy services to only one site participating in The RE-ENERGIZE Study, you will be taken directly to the pharmacy treatment allocation and dosage table, see below:



This is a test site

Treatment arm will display as shown below

Print All <input checked="" type="checkbox"/>	Randomization #	Randomization Date	Weight	BMI	Dosing Weight	Study Treatment	Treatment Dosage
<input checked="" type="checkbox"/>	1001R001	2016-01-06 17:07	111.00 kg	49.3	69.9 kg (Adjusted)	Maltodextrin	35 g/day
<input checked="" type="checkbox"/>	1001R002	2016-01-06 17:09	111.00 lbs	22.4	50.3 kg	Maltodextrin	25 g/day
<input checked="" type="checkbox"/>	1001R003	2016-01-20 16:28	176.00 lbs	23.9	79.8 kg	Maltodextrin	40 g/day
<input checked="" type="checkbox"/>	1001R004	2016-01-20 16:30	79.00 kg	23.3	79 kg	Maltodextrin	40 g/day
<input checked="" type="checkbox"/>	1001R005	2016-01-20 16:31	165.00 lbs	24.4	74.8 kg	Glutamine	35 g/day
<input checked="" type="checkbox"/>	1001R006	2016-01-27 14:23	78.00 kg	25.5	78 kg	Glutamine	40 g/day

The treatment allocation is concealed, therefore you will only see the treatment displayed as each new patient is randomized.



- 6) Check the treatment assignment on the CRS (see table above) which will be one of the following two:

Name of Group	Intervention
Active	Glutamine
Control	Maltodextrin (placebo)

- 7) The 8 character randomization number, including the 4 digit Site ID, and 4 character (one alpha and 3 numeric) enrollment (randomization) number will display in the column on the left (see table above). The pharmacy team member will use the 8 character randomization number provided by the Research Coordinator to confirm the treatment allocation for the correct patient.

8 character randomization #

1012 - R 001



Site # Enrollment #

- 8) The CRS will display the patient weight as entered by the research coordinator and the calculated BMI in accordance with the accompanying height entered by the research coordinator on the pre-randomization page.
- 9) The CRS is programmed to calculate the patient's dosing weight, and indicate if the weight has been adjusted due to a BMI of 35 or above.
- 10) The CRS will also calculate the daily treatment dosage and round to the nearest 5g. The daily Treatment Dosage will display in the right hand column as # g/day.
- 11) Print off the treatment assignment for the patient by clicking on the box in the left hand column next to the patient randomization #. This treatment assignment page must be signed by 2 pharmacy team members and filed in the patient Pharmacy Study files.
- 12) Click the "Logout" button to end the session.



Administration of IP

The IP will be reconstituted by the nurse or RC at the patient's bedside just prior to administration. IP will be mixed with sterile or tap water, per local standard for enteral feeds, in a clean specimen container.

Doses of 1 or more packets, 5 grams each, may be administered every 4 hours until the calculated dose has been administered. Each 5g packet of IP is to be mixed in 50 mL of water and given as a bolus via the enteral route. The intervention will begin as soon as possible, independent of initiation of enteral nutrition. The boluses are to be given via either a small bore feeding tube or a larger bore gastric/Levine tube. The boluses are to be given via a feeding tube once the latter has been inserted.

When the patient is tolerating oral feeds, the IP will be given TID or QID via the oral route according to the patient's preference, **as long as the patient receives the daily prescribed dose in grams.** When the intervention is administered orally, it may be mixed with any non-heated beverage (except alcohol) or non-heated food such as:

- Yogurt
- Applesauce
- Cereal
- Pudding

Mixing the IP with soda or highly acidic juices (such as grapefruit juice, orange juice, or lemonade) is not recommended as the IP degrades or becomes unstable in an acidic medium.

Interrupted or missed doses

Interruptions or missed doses of the intervention should not occur. In the event that an interruption or a missed dose does happen, the missed doses should be made up the same day by giving additional doses or doubling the scheduled dose, according to the following:

- Doses must be at least one hour apart
- Do not give more than double the scheduled dose at any one time

Administration of IP will be recorded on the Medication Administration Record.



Ordering of Investigational Product

1. Site pharmacists or pharmacy technicians are responsible for maintaining sufficient levels of Investigational Product (IP) to allow for uninterrupted dosing of active study subjects.
2. Resupply of IP will be shipped to sites on Monday's, Tuesday's, and Wednesday's (subject to change for statutory holidays) however orders may be placed Monday through Friday.
3. Please allow 7 days for your IP delivery to arrive at your site.
4. Minimum quantities of both components should be calculated based on the following
 - A. *If the average subject receives 8 packets per day, 15 days X 8 packets = 120 packets*
 - B. *For example if the Glutamine Bulk inventory equals (250 packs) and you enroll a subject who will receive (8 packs daily) then you have 31 day's supply. In ten days' time, you need to think about placing an order. By the time you receive your reorder your inventory will have dropped to 90 packs.*
 - C. **IMPORTANT REMINDER:** *In the event you have more than 1 participant on either the Active or Placebo arms, order extra accordingly.*
5. Orders should be placed by emailing securedata@epipharm.com
6. The body of the Email should contain the following:

Site ID: 1012
Glutamine: 150
Placebo: None
Ordered By: John Doe
7. The Central Pharmacy Depot will process the order on the next business day for shipping on Monday, Tuesday, or Wednesday.
8. Document the receipt of your shipment on the applicable IP Accountability Log.
9. Acknowledge receipt of your order and place the completed waybill in your study binder
10. Contact the Central Pharmacy Depot at 613.549.6666 ext. 3339 or email securedata@epipharm.com if you encounter problems with your order.



APPENDICES

Appendix A: Pharmacy Delegation and Training Log

Appendix B: NutreStore™ (L-glutamine) monograph

Appendix C: Maltrin M-100® maltodextrin monograph

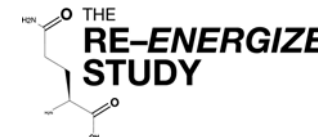
Appendix D: Temperature Log

Appendix E: IP Dispensing Log

Appendix F: IP Accountability Log - Glutamine

Appendix G: IP Accountability Log - Maltodextrin

Pharmacy Delegation & Training Log



The participating site pharmacy at _____ has established a Standard Operating Procedure for the RE-ENERGIZE Study.

<p>This log (or a similar log) is used by the Pharmacist at each site to:</p> <ol style="list-style-type: none"> 1) Indicate the pharmacy staff that have been delegated duties/tasks related to The RE-ENERGIZE Study and 2) Ensure that all pharmacy staff that have a material effect on The RE-ENERGIZE Study have been trained on the study procedures. This log (or similar log) is to be kept by the Pharmacy and sent to the Sponsor upon request. 	<p style="text-align: center;">Key Delegated Tasks</p> <ol style="list-style-type: none"> 1. Checking the treatment assignment on the Central Randomization System 2. Preparation and checking of Investigational Product 3. Labeling of Investigational Product 4. Maintaining Dispensing Logs 5. Maintaining Investigational Product Accountability & Destruction Records 6. Maintaining and managing inventory 7. Requesting resupply of inventory 8. Other (specify): _____
--	--

(site name)

Pharmacy personnel listed in this log have been trained according to the Standard Operating Procedures.

Name of Pharmacy contact*: _____

Signature of Pharmacy Contact: _____

*Pharmacy contact: is the main pharmacist/pharmacy technician that has been trained by the Methods Centre to carry out all pharmacy tasks related to the RE-ENERGIZE Study at the site.

Print Name	Signature	Initials	Study Role (Pharmacist, Technician, etc)	Key Delegated Tasks (see above)	Training	
					Date of training	Trained by: Trainer, Webinar, Self-Study, other - specify (if Trainer - provide name)

Table 3, an adverse event must have occurred in more than 10% of subjects in any treatment group.

Table 3 - Controlled Trial Adverse Events—Initial 4 Week Treatment Period

Adverse Experiences	Group A	Group B	Group C
	rhGH+SOD ¹ N=16 n(%)	rhGH+SOD[GLN] ¹ N=16 n(%)	SOD [GLN] ¹ N=9 n(%)
Total Number of Subjects with At Least One AE	16 (100)	16 (100)	8 (89)
Body as a Whole: General Disorders			
Edema, Peripheral	15 (94)	15 (94)	4 (44)
Edema, Facial	8 (50)	7 (44)	0 (0)
Pain	3 (19)	1 (6)	1 (11)
Chest Pain	3 (19)	0 (0)	0 (0)
Fever	0 (0)	1 (6)	2 (22)
Back Pain	1 (6)	0 (0)	1 (11)
Flu-like Disorder	0 (0)	1 (6)	1 (11)
Malaise	2 (13)	0 (0)	0 (0)
Edema, Generalized	2 (13)	0 (0)	0 (0)
Abdomen, Enlarged	0 (0)	0 (0)	1 (11)
Allergic Reaction	0 (0)	0 (0)	1 (11)
Rigors (Chills)	0 (0)	0 (0)	1 (11)
Gastrointestinal System Disorders	12 (75)	12 (75)	6 (67)
Flatulence	4 (25)	4 (25)	2 (22)
Abdominal Pain	4 (25)	2 (13)	1 (11)
Nausea	2 (13)	5 (31)	0 (0)
Tenesmus	1 (6)	3 (19)	3 (33)
Vomiting	3 (19)	3 (19)	1 (11)
Hemorrhoids	1 (6)	0 (0)	1 (11)
Mouth Dry	1 (6)	0 (0)	1 (11)
Musculoskeletal System Disorders	7 (44)	7 (44)	1 (11)
Arthralgia	7 (44)	5 (31)	0 (0)
Myalgia	2 (13)	0 (0)	1 (11)
Resistance Mechanism Disorders	6 (38)	3 (19)	4 (44)
Infection	0 (0)	1 (6)	3 (33)
Infection Bacterial	3 (19)	0 (0)	1 (11)
Infection Viral	1 (6)	2 (13)	0 (0)
Moniliasis	2 (13)	0 (0)	0 (0)
Application Site Disorders	5 (31)	4 (25)	1 (11)
Injection Site Reaction	3 (19)	4 (25)	1 (11)
Injection Site Pain	5 (31)	0 (0)	0 (0)
Central and Peripheral Nervous System Disorders	4 (25)	4 (25)	2 (22)
Dizziness	1 (6)	2 (13)	0 (0)
Headache	1 (6)	1 (6)	1 (11)
Hypoesthesia	1 (6)	1 (6)	1 (11)
Skin and Appendages Disorders	4 (25)	4 (25)	2 (22)
Rash	1 (6)	2 (13)	0 (0)
Pruritis	0 (0)	1 (6)	1 (11)
Sweating Increased	2 (13)	0 (0)	0 (0)
Nail Disorder	0 (0)	0 (0)	1 (11)
Respiratory System Disorders	1 (6)	5 (31)	1 (11)
Rhinitis	0 (0)	3 (19)	1 (11)
Metabolic and Nutritional Disorders	3 (19)	1 (6)	1 (11)
Dehydration	3 (19)	0 (0)	1 (11)
Thirst	0 (0)	0 (0)	1 (11)
Urinary System Disorders	2 (13)	1 (6)	1 (11)
Pyelonephritis	0 (0)	0 (0)	1 (11)
Psychiatric Disorders	1 (6)	0 (0)	2 (22)
Depression	0 (0)	0 (0)	2 (22)
Reproductive Disorders, Female	2 (13)	0 (0)	1 (11)
Breast Pain, Female	1 (6)	0 (0)	1 (11)
Hearing and Vestibular Disorders	0 (0)	2 (13)	0 (0)
Far or Hearing Symptoms	0 (0)	2 (13)	0 (0)

¹SOD[GLN] = Specialized Oral Diet supplemented with Glutamine; rhGH+SOD = Human Growth Hormone plus Specialized Oral Diet; rhGH + SOD [GLN] = Human Growth Hormone plus Specialized Oral Diet supplemented with Glutamine
Group A: rh-GH + SOD for 4 weeks followed by SOD for 12 weeks
Group B: rh-GH + SOD [GLN] for 4 weeks followed by SOD [GLN] for 12 weeks

weeks
Group C: rh-GH placebo + SOD [GLN] for 4 weeks followed by SOD [GLN] for 12 weeks

Table 4 summarizes the number of subjects by system-organ class who experienced an adverse event during weeks 5 to 18 of the randomized, controlled SBS study. To be listed in Table 4, an adverse event must have occurred in more than 10% of subjects in any treatment group.

Table 4—Controlled Trial Adverse Events - Weeks 5 to 18

Adverse Experiences	Group A	Group B	Group C
	rhGH+SOD ¹ N=15 n(%)	rhGH+SOD [GLN] ¹ N=16 n(%)	SOD[GLN] ¹ N=9 n(%)
Total Number of Subjects with At Least One AE	12 (80)	13 (81)	7 (78)
Gastrointestinal System Disorders	7 (47)	7 (44)	3 (33)
Nausea	3 (20)	0 (0)	2 (22)
Vomiting	2 (13)	3 (19)	0 (0)
Abdominal Pain	3 (20)	1 (6)	0 (0)
Tenesmus	0 (0)	3 (19)	1 (11)
Pancreatitis	0 (0)	1 (6)	1 (11)
Constipation	0 (0)	0 (0)	1 (11)
Crohn's Disease Aggravated	0 (0)	0 (0)	1 (11)
Gastric Ulcer	0 (0)	0 (0)	1 (11)
Gastrointestinal Fistula	0 (0)	0 (0)	1 (11)
Resistance Mechanism Disorders	6 (40)	5 (31)	5 (56)
Infection Bacterial	0 (0)	2 (13)	3 (33)
Infection Viral	3 (20)	1 (6)	1 (11)
Infection	1 (7)	2 (13)	1 (11)
Sepsis	3 (20)	1 (6)	0 (0)
Body as a Whole: General Disorders	4 (27)	2 (13)	1 (11)
Fever	2 (13)	1 (6)	1 (11)
Fatigue	2 (13)	0 (0)	0 (0)
Respiratory System Disorders	2 (13)	4 (25)	1 (11)
Rhinitis	1 (7)	3 (19)	0 (0)
Laryngitis	0 (0)	0 (0)	1 (11)
Pharyngitis	0 (0)	0 (0)	1 (11)
Reproductive Disorders, Female	0 (0)	4 (25)	1 (11)
Vaginal Fungal Infection	0 (0)	0 (0)	1 (11)
Skin and Appendages Disorders	2 (13)	2 (13)	1 (11)
Rash	1 (7)	0 (0)	1 (11)
Musculoskeletal System Disorders	2 (13)	2 (13)	0 (0)
Arthralgia	2 (13)	2 (13)	0 (0)
Psychiatric Disorders	0 (0)	1 (6)	1 (11)
Depression	0 (0)	0 (0)	1 (11)
Insomnia	0 (0)	0 (0)	1 (11)
Urinary System Disorders	0 (0)	0 (0)	2 (22)
Pyelonephritis	0 (0)	0 (0)	1 (11)
Renal Calculus	0 (0)	0 (0)	1 (11)
Application Site Disorders	0 (0)	0 (0)	1 (11)
Injection Site Reaction	0 (0)	0 (0)	1 (11)
Liver and Biliary System Disorders	0 (0)	0 (0)	1 (11)
Hepatic Function Abnormal	0 (0)	0 (0)	1 (11)
Vascular Extracardiac Disorders	0 (0)	0 (0)	1 (11)
Vascular Disorder	0 (0)	0 (0)	1 (11)

Group A: rh-GH + SOD for 4 weeks followed by SOD for 12 weeks
Group B: rh-GH + SOD [GLN] for 4 weeks followed by SOD [GLN] for 12 weeks
Group C: rh-GH placebo + SOD [GLN] for 4 weeks followed by SOD [GLN] for 12 weeks

¹SOD[GLN] = Specialized Oral Diet supplemented with Glutamine; rhGH+SOD = Human Growth Hormone plus Specialized Oral Diet; rhGH + SOD [GLN] = Human Growth Hormone plus Specialized Oral Diet supplemented with Glutamine

The safety profile in patients receiving oral glutamine with growth hormone was similar to the safety profile in patients receiving growth hormone without glutamine. During the initial 4 week treatment period, 100% of patients receiving growth hormone with and without glutamine reported at least one adverse event (AE), whereas 89% of patients receiving growth hormone placebo with glutamine reported at least one AE. During weeks 5 to 18, 81% of patients receiving growth hormone with glutamine, 80% of patients receiving growth hormone without glutamine and 78% of patients receiving growth hormone placebo with glutamine experienced at least one AE. There were no deaths in this study.

OVERDOSAGE

Single oral doses of glutamine at about 20-22 g/kg, 8-11 g/kg, and 19 g/kg were lethal in mice, rats, and rabbits, respectively.

DOSAGE AND ADMINISTRATION

NutreStore™ should be administered as a cotherapy with recombinant human growth hormone [see the package insert for somatotropin (rDNA origin) for injection for full prescribing information] followed by continued NutreStore™ for up to 16 weeks.

The recommended dosage of NutreStore™ is 30 g daily in divided doses (5 g taken 6 times each day orally) for up to 16 weeks. Each dose of NutreStore™ (5g) should be reconstituted in 8-oz (250-mL) of water prior to consumption.

NutreStore™ should be taken with meals or snacks at 2- to 3-hour intervals while awake. The volume of water may be varied according to the patient's preference. In the event of a patient's transient intolerance to oral intake, a dose may be delayed for up to 2 hours. The safety and efficacy of NutreStore™ have not been studied beyond 16 weeks of treatment.

HOW SUPPLIED

NutreStore™ is supplied in preprinted paper-foil-plastic laminate packets containing 5 g of L-glutamine powder.

84 packets (5gm each) - NDC 42457-001-84

STORAGE

NutreStore™ (L-glutamine powder for oral solution) should be stored at 25°C (77°F) with excursions allowed to 15°-30°C (59°-86°F). [See USP Controlled Room Temperature].

For additional information concerning NutreStore™, contact:



Emmaus Medical, Inc.
20725 S. Western Ave., Suite 136
Torrance, CA 90501-1884
Tel: 1-877-420-6493
www.nutrestore.com

Manufactured by:
Anderson Packaging, Inc.
4545 Assembly Drive
Rockford, IL 61109

Rx only

Revised October 2008

NutreStore™ is a trademark of Emmaus Medical, Inc. under license from Cato Holding Company.

© 2008 Emmaus Medical, Inc.

SMM-007-02 0810

MATERIAL SAFETY DATA SHEET

IDENTITY(As Used on Label and List)
L-GLUTAMINE

SECTION I	
MANUFACTURER'S NAME Kyowa Hakko Kogyo Co., Ltd.	EMERGENCY TELEPHONE NUMBER 1-212-319-5353 (N.Y. Office) 1-949-425-0707 (West Coast Office)
ADDRESS (Number, Street, City, State, and ZIP Code) 1-6-1, Ohtemachi Chiyoda-ku, Tokyo, Japan, 100-8185	TELEPHONE NUMBER FOR INFORMATION 1-212-319-5353 (N.Y. Office) 1-949-425-0707 (West Coast Office)
	DATE PREPARED August 1, 2003
	PREPARER Quality Assurance Department Bio-Chemicals Company

SECTION II - HAZARDOUS INGREDIENTS / IDENTITY INFORMATION		
CHEMICAL NAME AND SYNONYMS L-Glutamine	CHEMICAL FAMILY Amino Acid	
FORMULA $C_5H_{10}N_2O_3$ (146.15)	CAS NUMBER 56-85-9	
INGREDIENT L-Glutamine	PERCENT Pure material	HAZARDOUS No
HAZARDOUS MIXTURES OF OTHER LIQUIDS, SOLIDS, OR GASES None		

SECTION III - PHYSICAL DATA			
BOILING POINT	Unknown	SPECIFIC GRAVITY (H ₂ O = 1)	Unknown
VAPOR PRESSURE(mmHg.)	Unknown	MELTING POINT	Not Applicable
VAPOR DENSITY(AIR= 1)	Not Applicable(solid)	EVAPORATION RATE (Butyl Acetate = 1)	Not Applicable (solid)
SOLUBILITY IN WATER	Soluble		
APPEARANCE AND ODOR White crystals or crystalline powder, odorless			

SECTION IV - FIRE AND EXPLOSION HAZARD DATA			
FLASH POINT (Method used) None	FLAMMABLE LIMITS None	LEL	UEL
EXTINGUISHING MEDIA Water, Foam, CO ₂ , Dry chemical			
SPECIAL FIRE FIGHTING PROCEDURES None			
UNUSUAL FIRE AND EXPLOSION HAZARD As with most organic solids, dust from this material may pose an explosion of fire hazard, if suspended in air and there is a source of ignition.			

SECTION V - REACTIVITY DATA			
STABILITY	UNSTABLE		CONDITIONS TO AVOID
	STABLE	X	
INCOMPATIBILITY (MATERIALS TO AVOID)			
Oxidizer			
HAZARDOUS DECOMPOSITION OR BYPRODUCTS			
None			
HAZARDOUS POLYMERIZATION	MAY OCCUR		CONDITIONS TO AVOID
	WILL NOT OCCUR	X	

SECTION VI - HEALTH HAZARD DATA			
ROUTE(S) OF ENTRY:	INHALATION?	SKIN?	INGESTION?
	Not determined	Not determined	Not determined
HEALTH HAZARDS(ACUTE AND CRONIC)			
This material is considered to be non-toxic and non-hazardous in small quantities and under conditions of normal occupational exposure.			
CARCINOGENICITY	NTP?	IARC MONOGRAPHS?	OSHA REGULATED?
	No	No	No
SIGNS AND SYMPTOMS OF EXPOSURE			
May cause irritation of skin or eyes. Wash thoroughly with water.			
MEDICAL CONDITIONS: GENERALLY AGGRAVATED BY EXPOSURE			
Not expected			
EMERGENCY AND FIRST AID PROCEDURES			
Wash thoroughly with water. If irritation occurs, consult a physician.			

SECTION VII - PRECAUTIONS FOR SAFE HANDLING AND USE	
STEPS TO BE TAKEN IN CASE MATERIAL IS RELEASED OR SPILLED	
Material is solid. Use solid waste clean-up procedures.	
WASTE DISPOSAL METHOD	
With chemical wastes	
PRECAUTIONS TO BE TAKEN IN HANDLING AND STORING	
Controlled room temperature in tight container.	
OTHER PRECAUTIONS	

SECTION VIII - CONTROL MEASURES		
RESPIRATORY PROTECTION(Specify type)		
Gauze mask(recommended)		
VENTILATION	LOCAL EXHAUST	SPECIAL
	MECHANICAL(General)	OTHER
PROTECTIVE GLOVES Recommended	EYE PROTECTION Recommended	
OTHER PROTECTIVE EQUIPMENT		
WORK / HYGIENIC PRACTICES		



MALTRIN® M100

Maltodextrin

DESCRIPTION

MALTRIN® maltodextrins are bland, minimally sweet white carbohydrate powders produced from corn of U.S. origin. They are products with varying length polymer profiles that provide a wide range of viscosity and solubility characteristics.

REGULATORY

MALTRIN® maltodextrins are generally recognized as safe (GRAS) as direct food ingredients at levels consistent with good manufacturing practices (21 CFR 184.1444). The correct labeling is “maltodextrin”, but all label declarations should be reviewed with appropriate legal counsel.

PACKAGING, STORAGE AND SHELF LIFE

- Packaged in: 50-pound net, multiwall paper bags that are individually shrink wrapped; 2,000-pound tote bags; 25-kilogram bags.
- Store under ambient conditions; protect from excessive heat and excessive humidity for extended periods of time.
- Under good storage conditions the shelf life should be a minimum of two years.
- MALTRIN® maltodextrins will remain stable, but may pick up moisture if stored in excessive humidity, so reevaluation for moisture is recommended after one year to confirm the product still meets desired specifications.

PRODUCT ATTRIBUTES

- Heated solutions at 30% solids remain clear
- Minimal contribution to viscosity at solids below 30%
- Very low hygroscopicity
- Low sweetness

APPLICATIONS

- Source of energy for nutritional products
- Aids in spray drying flavors or other ingredients
- Carrier and dispersant for dry-blend mixes and seasonings
- Prevents sugar crystallization in confections, frostings and glazes
- Contributes to total solids in frozen desserts

LOT CODES

Lot codes can be interpreted as follows: The first alpha character represents the product, followed by the last two numbers of the year and then the Julian date. Numbers following the Julian date represent the product line and the lot of the day.

Example: M1310801: M = MALTRIN®; 13 = 2013; 108 = Apr. 18; 01 = first lot

Technical Information

MALTRIN® M100

Maltodextrin

TYPICAL NUTRITIONAL INFORMATION

Values per 100 grams of product

Calories	378
Calories from Fat	0 g
Total Fat	0 g
Saturated Fat	0 g
Trans Fat	0 g
Monounsaturated Fat	0 g
Polyunsaturated Fat	0 g
Protein	0 g
Total Carbohydrate	94.5 g
Sugars	4 g
Dietary Fiber	0 g
Soluble Fiber	0 g
Insoluble Fiber	0 g
Sugar Alcohols	0 g
Other Carbohydrates	90.5 g
Calcium	16 mg
Iron	0 mg
Sodium	90 mg
Magnesium	6 mg
Potassium	5 mg
Phosphorus	8 mg

Mandatory Nutrition Facts listed in bold

The above information is considered to be typical and not part of the product specification. Each value represents the average analyses performed using samples from several product lots. All nutrient data is reported for 100 grams of "as is" product, assuming 5 percent moisture and 94.5 grams of carbohydrate.

NOT a significant source of Vitamin A, Vitamin C, Vitamin D, Vitamin E, Vitamin K, Thiamin, Riboflavin, Niacin, Vitamin B6, Folate, Vitamin B12, Panthothenic Acid, Biotin, or minerals Chromium, Copper, Iodine, Manganese, Molybdenum, Selenium, Zinc.

STANDARD SPECIFICATIONS*

• Dextrose Equivalent	9.0-12.0
• Moisture, %	6.0 max.
• Ash (sulfated), %	0.5 max.
• pH (20% solution)	4.0-4.7
• Bulk Density (packed), lb/cu ft	30.0-39.0
• Aerobic Plate Count, CFU/g	100 max.
• Yeast/Mold, CFU/g	100 max.
• <u>E. coli</u>	Negative/10 g
• Salmonella	Negative/25 g

* Any specification different from or not listed above must be agreed upon between the customer and Grain Processing during specification approval.

CARBOHYDRATE LABELING INFORMATION**

• DP1 (glucose) grams per 100 grams	1
• DP2 (maltose) grams per 100 grams	3

** Carbohydrate information reported "as is".

DEGREE OF POLYMERIZATION (DP PROFILE)***

• DP1-7, %	30
• DP8-25, %	35
• DP26-40, %	1
• Greater than DP40, %	34

*** DP profile data reported "as is".

MALTRIN® and MALTRIN QD® are registered trademarks of Grain Processing Corporation.

The information presented in this document is believed to be correct. Any recommendations or suggestions are made without guarantee or representation as to results for any particular usage. You are responsible for determining that the use of any GPC product, as well as your product and its use, and any claims made about your product, all comply with applicable laws and regulations for your particular jurisdiction. The information contained in this document is offered solely for your independent investigation, verification and consideration.

© 2014 Grain Processing Corporation



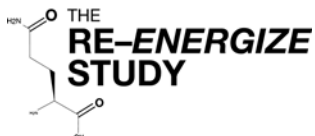
Grain Processing Corporation

1600 Oregon Street | Muscatine, Iowa 52761 USA

p: 563.264.4265 | f: 563.264.4289

e: food.sales@grainprocessing.com | grainprocessing.com

M100 TI 011314



Investigational Product Temperature Log

Site Name _____

Site # _____

Investigational Product is to be **stored** in a cool dry area **15°- 30° Celsius / 59°- 86° Fahrenheit**.

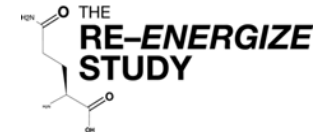
Record the temperature daily. Provide comment for days temperature is not recorded.

Keep log with study IP documents. To be provided to CERU Central Pharmacy Manager/Unblinded Monitor upon request.

Month _____

Year _____

Temperature recorded in (circle one)				Celsius	Fahrenheit		Date	Temperature	Initials	Comments
Date	Temperature	Initials	Comments							
1							16			
2							17			
3							18			
4							19			
5							20			
6							21			
7							22			
8							23			
9							24			
10							25			
11							26			
12							27			
13							28			
14							29			
15							30			
							31			



Investigational Product Dispensing Log - Patient

Treatment Allocation:

Glutamine
 Maltodextrin (placebo)

Site: _____ Page ____ of ____

Patient ID#: _____ Patient Initials: _____ Randomization #: _____

1. Prescription date: _____ Dosing Weight: _____ Total Daily Dose: _____ grams

2. Prescription date: _____ Dosing Weight: _____ Total Daily Dose: _____ grams

3. Prescription date: _____ Dosing Weight: _____ Total Daily Dose: _____ grams

Did the prescription change ?

Yes

No

Date	Glutamine			Maltodextrin			Initials	
	Total Daily Dose (g)	Quantity Dispensed (# 5g packets)	Lot & Expiry	Total Daily Dose (g)	Quantity Dispensed (# 5g packets)	Lot & Expiry	Prepared By	Checked By

